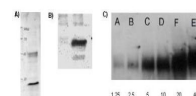


Product Datasheet

Lysine Acetylated (AcK) (RABBIT) Antibody Biotin Conjugated GRP4066

Description	Anti-Lysine Acetylated (AcK) (RABBIT) Antibody Biotin Conjugated
Species/Host	Rabbit
Reactivity	Avian, Mammalian
Conjugation	Biotin
Tested Applications	ELISA, WB
Form/Appearance	0.02 M Potassium Phosphate, 0.15 M Sodium Chloride, pH 7.2
Concentration	1 mg/mL
Storage	Store vial at -20 °C or below prior to opening. Dilute only prior to immediate use. For extended storage, aliquot contents and freeze at -20 °C or below. Avoid cycles of freezing and thawing.
Note	For research use only.
Isotype	IgG
Clonality	Polyclonal
Source	This affinity-purified antibody was prepared from whole rabbit serum produced by repeated immunizations with acetylated lysine conjugated KLH.
Dilution Range	ELISA: 1:5,000,Western Blot: 1:1,000-1:5,000



Anti-Acetylated Lysine (AcK) Antibody - Western Blot