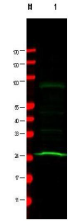


## Product Datasheet

### MAD2L1 (MOUSE) Monoclonal Antibody GRP2068

<b>Description</b>	Anti-MAD2L1 (MOUSE) Monoclonal Antibody
<b>Species/Host</b>	Mouse
<b>Reactivity</b>	Human
<b>Conjugation</b>	Unconjugated
<b>Tested Applications</b>	ELISA, IP, WB
<b>Form/Appearance</b>	0.02 M Potassium Phosphate, 0.15 M Sodium Chloride, pH 7.2
<b>Concentration</b>	1.0 mg/mL
<b>Note</b>	For research use only.
<b>Isotype</b>	IgG1
<b>Clonality</b>	Monoclonal
<b>Source</b>	This protein A purified monoclonal antibody was produced by repeated immunizations with full-length recombinant human MAD2L1 protein.
<b>Clone ID</b>	17D10
<b>Uniprot ID</b>	<a href="#">Q13257</a>
<b>Entrez</b>	<a href="https://www.ncbi.nlm.nih.gov/gene//4085">https://www.ncbi.nlm.nih.gov/gene//4085</a>
<b>Dilution Range</b>	ELISA: 1:5,000 - 1:20,000, Immunoprecipitation: 1:100, Western Blot: 1:200 - 1:2,000



Anti-MAD2L1 Antibody -  
Western  
Blot