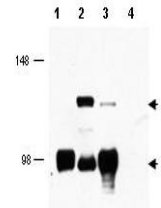


Product Datasheet

MECT1 (RABBIT) Antibody GRP3547

Description	Anti-MECT1 (RABBIT) Antibody
Species/Host	Rabbit
Reactivity	Human, Mouse, Rat, Bovine, Zebrafish, Pufferfish
Conjugation	Unconjugated
Tested Applications	ELISA, WB
Form/Appearance	0.02 M Potassium Phosphate, 0.15 M Sodium Chloride, pH 7.2
Concentration	1.0 mg/mL
Note	For research use only.
Isotype	IgG
Clonality	Polyclonal
Source	This affinity purified antibody was prepared from whole rabbit serum produced by repeated immunizations with a synthetic peptide corresponding to amino acids 19-34 of human MECT1 protein.
Uniprot ID	Q6UUV9
Entrez	https://www.ncbi.nlm.nih.gov/gene//23373
Dilution Range	ELISA: 1:10,000 - 1:40,000, Western Blot: 1:500 - 1:2,000



Anti-MECT1 Antibody -
Western
Blot