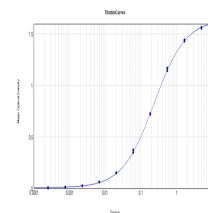


Product Datasheet

MONKEY IgG (H&L) (RABBIT) Antibody Alkaline Phosphatase Conjugated GRP5346

Description	Anti-MONKEY IgG (H&L) (RABBIT) Antibody Alkaline Phosphatase Conjugated
Species/Host	Rabbit
Reactivity	Monkey
Conjugation	AP
Tested Applications	ELISA, IHC-P, WB
Form/Appearance	0.02 M Potassium Phosphate, 0.15 M Sodium Chloride, pH 7.2
Concentration	1.0 mg/mL
Note	For research use only.
Isotype	IgG
Clonality	Polyclonal
Source	Anti-Monkey IgG (H&L) was produced by repeated immunization with monkey IgG in rabbit.
Dilution Range	ELISA: 1:10,000 - 1:50,000, Immunochemistry: User Optimized, Western Blot: 1:1,000 - 1:5,000
Application Notes	Anti-Monkey IgG (H&L) ALP conjugated Antibody is suitable for use in Western Blotting, Immunohistochemistry, ELISA as well as other antibody detection methods. Specific conditions for reactivity and signal detection should be optimized by the end user.



ELISA Results of Rabbit Anti-Monkey IgG Antibody Alkaline Phosphatase Conjugate