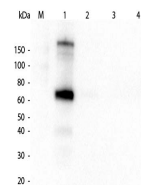


Product Datasheet

MONKEY IgM (mu chain) (GOAT) Antibody GRP5320

Description	Anti-MONKEY IgM (mu chain) (GOAT) Antibody
Species/Host	Goat
Reactivity	Monkey
Conjugation	Unconjugated
Tested Applications	ELISA, IHC-P, WB
Form/Appearance	0.02 M Potassium Phosphate, 0.15 M Sodium Chloride, pH 7.2
Concentration	1.0 mg/mL
Note	For research use only.
Isotype	IgG
Clonality	Polyclonal
Source	Monkey IgM whole molecule
Dilution Range	ELISA: 1:16,700 - 1:17,700, Immunochemistry: 1:500 - 1:2,500, Western Blot: 1:1,000 - 1:5,000
Application Notes	Anti-Monkey IgM (mu chain) is suitable for use in immunoelectrophoresis, western-blot, competitive western-blot, ELISA and competitive ELISA assays. Specific conditions for reactivity and signal detection should be optimized by the end user.



Monkey IgM (mu chain)
Antibody
- Western Blot