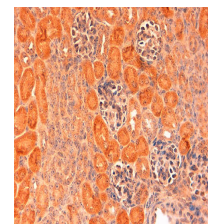


## Product Datasheet

### Mouse DELTA-1 (RABBIT) Antibody GRP3490

<b>Description</b>	Anti-Mouse DELTA-1 (RABBIT) Antibody
<b>Species/Host</b>	Rabbit
<b>Reactivity</b>	Mouse
<b>Conjugation</b>	Unconjugated
<b>Tested Applications</b>	ELISA, IHC-P, WB
<b>Form/Appearance</b>	0.02 M Potassium Phosphate, 0.15 M Sodium Chloride, pH 7.2
<b>Concentration</b>	1.1 mg/mL
<b>Note</b>	For research use only.
<b>Isotype</b>	IgG
<b>Clonality</b>	Polyclonal
<b>Source</b>	This affinity purified antibody was prepared from whole rabbit serum produced by repeated immunizations with a synthetic peptide corresponding to an internal region near amino acids 150-175 of Mouse DELTA-1. Swiss Prot accession Q61483.
<b>Uniprot ID</b>	<b>Q61483</b>
<b>Entrez</b>	<a href="https://www.ncbi.nlm.nih.gov/gene//13388">https://www.ncbi.nlm.nih.gov/gene//13388</a>
<b>Dilution Range</b>	ELISA: 1:3,000 - 1:12,000,Immunochemistry: 2ug/ml,Western Blot: 1:100 - 1:1,000

**Application Notes** Anti-DELTA-1 Antibody has been tested for use in ELISA against the immunizing peptide and in IHC. It is expected that anti-Delta-1 antibody will be reactive in western blot assays Reactivity in other immunoassays is unknown.



Anti mouse Delta 1 -  
Immunohistochemistry