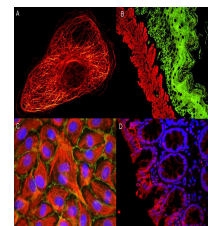


Product Datasheet

MOUSE IgG (gamma 1, 2a, 2b and 3 chain) (RABBIT) Antibody ATTO 488 Conjugated GRP4880

Description	Anti-MOUSE IgG (gamma 1, 2a, 2b and 3 chain) (RABBIT) Antibody ATTO 488 Conjugated
Species/Host	Rabbit
Reactivity	Mouse
Conjugation	ATTO-488
Tested Applications	IF, IHC-P, WB
Form/Appearance	0.02 M Potassium Phosphate, 0.15 M Sodium Chloride, pH 7.2
Concentration	1.0 mg/mL
Note	For research use only.
Isotype	IgG
Clonality	Polyclonal
Source	highly purified mouse IgG gamma 1, gamma 2a, gamma 2b and gamma 3 proteins
Dilution Range	FLISA: >1:20,000, Fluorochrome: 3.1, IF Microscopy: >1:5,000, Western Blot: >1:10,000



Atto
Dye-Immunofluorescence
microscopy