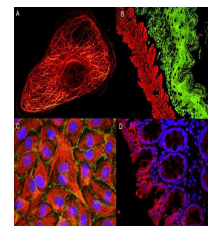


Product Datasheet

MOUSE IgG (H&L) (GOAT) Antibody ATTO 655 Conjugated (Min X Bv Ch Gt GP Ham Hs Hu Rb Rt & Sh Serum Proteins) GRP4789

Description	Anti-MOUSE IgG (H&L) (GOAT) Antibody ATTO 655 Conjugated (Min X Bv Ch Gt GP Ham Hs Hu Rb Rt & Sh Serum Proteins)
Species/Host	Goat
Reactivity	Mouse
Conjugation	ATTO-655
Tested Applications	IF, IHC-P, WB
Form/Appearance	0.02 M Potassium Phosphate, 0.15 M Sodium Chloride, pH 7.2
Concentration	1.0 mg/mL
Note	For research use only.
Isotype	IgG
Clonality	Polyclonal
Source	Mouse IgG whole molecule
Dilution Range	FLISA: >1:20,000, Fluorochrome: 3.7, IF Microscopy: >1:5,000, Western Blot: >1:10,000



Atto
Dye-Immunofluorescence
microscopy