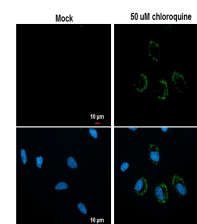


Product Datasheet

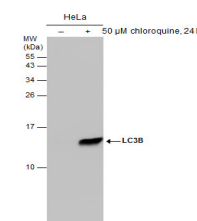
LC3B antibody [GT3612] GRP81

Description	The product of this gene is a subunit of neuronal microtubule-associated MAP1A and MAP1B proteins, which are involved in microtubule assembly and important for neurogenesis. Studies on the rat homolog implicate a role for this gene in autophagy, a process that involves the bulk degradation of cytoplasmic component. [provided by RefSeq]
Species/Host	Mouse
Reactivity	Human
Conjugation	Unconjugated
Tested Applications	ICC, IF, WB
Immunogen	Carrier-protein conjugated synthetic peptide encompassing a sequence within the N-terminus region of human LC3B. The exact sequence is proprietary.
Form/Appearance	Liquid: PBS
Concentration	0.43 mg/ml
Storage	Store as concentrated solution. Centrifuge briefly prior to opening vial. For short-term storage (1-2 weeks), store at 4°C. For long-term storage, aliquot and store at -20°C or below. Avoid multiple freeze-thaw cycles.
Note	For research use only.
Isotype	IgG2a
Clonality	Monoclonal
Purity	Affinity purified by Protein A.
Clone ID	GT3612
Uniprot ID	Q9GZQ8
Entrez	81631
Dilution Range	WB: 1:500-1:3000, ICC: 1:100-1:1000



LC3B antibody [GT3612] detects LC3B protein at autophagosome by immunofluorescent analysis.

Samples: HeLa cells mock (left) and treated with 50 μM Chloroquine for 24 hr (right) were fixed in 4% paraformaldehyde at RT for 15 min. Green: LC3B protein stained



Untreated (â€“) and treated (+) HeLa whole cell extracts (50 μg) were separated by 15% SDS-PAGE, and the membrane was blotted with LC3B antibody [GT3612] (GRP533) diluted at 1:500.