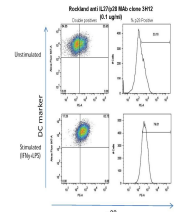


Product Datasheet

Mouse IL-27/p28 (RAT) Monoclonal Antibody GRP3098

Description	Anti-Mouse IL-27/p28 (RAT) Monoclonal Antibody
Species/Host	Rat
Reactivity	Mouse
Conjugation	Unconjugated
Tested Applications	ELISA, FC, WB
Form/Appearance	0.02 M Potassium Phosphate, 0.15 M Sodium Chloride, pH 7.2
Concentration	1.0 mg/mL
Note	For research use only.
Isotype	IgG2a
Clonality	Monoclonal
Source	Anti-IL-27/p28 monoclonal antibody was produced in rats by repeated immunizations with mature length recombinant mouse p28 protein (produced in E.coli) followed by hybridoma development.
Clone ID	3H12.F10
Uniprot ID	Q8K3I6
Entrez	https://www.ncbi.nlm.nih.gov/gene//246779
Dilution Range	ELISA: 1:10,000,Flow Cytometry: 1 ug / ml,Western Blot: 1:1000



Anti IL-27/p28 rat monoclonal antibody-Flow Cytometry