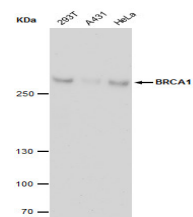


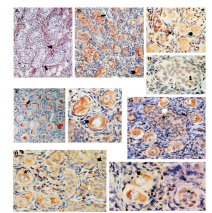
## Product Datasheet

### BRCA1 antibody [17F8] - ChIP grade GRP85

<b>Description</b>	BRCA1-17F8 recognizes full-length BRCA1, a 220kDa nuclear phosphoprotein, and does not recognize the Aexon 11 splice variant. In a high proportion of breast and ovarian cancer cell lines, BRCA1 aberrantly mislocates to the cytoplasm. Its usefulness to monitor functional inactivation of BRCA1 in sporadic breast cancers is under active investigation.
<b>Species/Host</b>	Mouse
<b>Reactivity</b>	Human, Mouse
<b>Conjugation</b>	Unconjugated
<b>Tested Applications</b>	ChIP, ELISA, ICC, IF, IHC-P, IP, WB
<b>Immunogen</b>	Protein fragment expressed in E. coli corresponding to amino acids 762-1315.
<b>Form/Appearance</b>	Liquid: PBS
<b>Concentration</b>	1.55 mg/ml
<b>Storage</b>	Store as concentrated solution. Centrifuge briefly prior to opening vial. For short-term storage (1-2 weeks), store at 4°C. For long-term storage, aliquot and store at -20°C or below. Avoid multiple freeze-thaw cycles.
<b>Note</b>	For research use only.
<b>Isotype</b>	IgG1
<b>Clonality</b>	Monoclonal
<b>Purity</b>	Protein G purified
<b>Clone ID</b>	17F8
<b>Uniprot ID</b>	<b>P38398</b>
<b>Entrez</b>	<b>672</b>
<b>Dilution Range</b>	WB: 1:500-1:3000, ICC: 1 ?g/ml



BRCA1 antibody [17F8] - ChIP grade detects BRCA1 protein by western blot analysis. Various whole cell extracts (30 ?g) were separated by 5% SDS-PAGE, and blotted with BRCA1 antibody [17F8] - ChIP grade (GRP537) diluted by 1:500. The HRP-conjugated anti



The IHC-P analysis of BRCA1 antibody [17F8] - ChIP grade was published by Bernard-Gallon DJ and colleagues in the journal Breast Cancer Res in 2001. PMID: 11250747