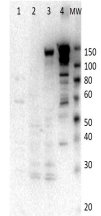


## Product Datasheet

### Myosin 6 (Rabbit) Antibody GRP1595

<b>Species/Host</b>	Rabbit
<b>Reactivity</b>	Human, Pig
<b>Conjugation</b>	Unconjugated
<b>Tested Applications</b>	ELISA, WB
<b>Form/Appearance</b>	0.02 M Potassium Phosphate, 0.15 M Sodium Chloride, pH 7.2
<b>Concentration</b>	25 mg/mL
<b>Note</b>	For research use only.
<b>Isotype</b>	Antiserum
<b>Clonality</b>	Polyclonal
<b>Source</b>	Anti-Myosin-6 was prepared from whole rabbit serum produced by repeated immunizations with full length myosin-6 construct expressed in SF9 insect cells corresponding to porcine myosin-6 protein.
<b>Uniprot ID</b>	<a href="#">Q29122</a>
<b>Entrez</b>	<a href="https://www.ncbi.nlm.nih.gov/gene//397085">https://www.ncbi.nlm.nih.gov/gene//397085</a>
<b>Dilution Range</b>	ELISA: 1:10,000,Western Blot: 1:1000



Western Blot of Rabbit anti-Myosin-6 antibody