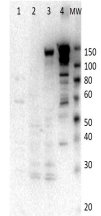


Product Datasheet

Myosin 6 (Rabbit) Antibody GRP1596

Species/Host	Rabbit
Reactivity	Human, Pig
Conjugation	Unconjugated
Tested Applications	ELISA, WB
Form/Appearance	0.02 M Potassium Phosphate, 0.15 M Sodium Chloride, pH 7.2
Concentration	25 mg/mL
Note	For research use only.
Isotype	Antiserum
Clonality	Polyclonal
Source	Anti-Myosin-6 was prepared from whole rabbit serum produced by repeated immunizations with a full length myosin-6 construct expressed in SF9 insect cells corresponding to porcine myosin-6 protein.
Uniprot ID	Q29122
Entrez	https://www.ncbi.nlm.nih.gov/gene/397085
Dilution Range	ELISA: 1:10,000, Western Blot: 1:1000



Western Blot of Rabbit anti-Myosin-6 antibody