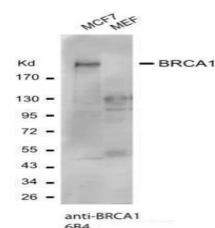


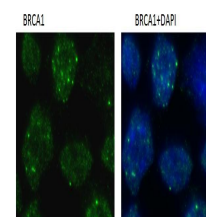
## Product Datasheet

### BRCA1 antibody [6B4] - ChIP grade GRP86

<b>Description</b>	BRCA1-6B4 recognizes full length BRCA1, a 220kDa nuclear phosphoprotein, and does not recognize the exon 11 splice variant. Mutations in this tumor suppressor gene greatly increase the risk of breast cancer. In a high proportion of breast and ovarian cancer cell lines, BRCA1 aberrantly mislocates to the cytoplasm. Recent studies suggest a role for BRCA1 in DNA double strand break repair because of its association with Rad51.
<b>Species/Host</b>	Mouse
<b>Reactivity</b>	Human, Mouse
<b>Conjugation</b>	Unconjugated
<b>Tested Applications</b>	ChIP, ICC, IF, IHC-P, IP, WB
<b>Immunogen</b>	BRCA1 protein fragment expressed in E. coli corresponding to amino acids 341-748.
<b>Form/Appearance</b>	Liquid: PBS
<b>Concentration</b>	2.75 mg/ml
<b>Storage</b>	Store as concentrated solution. Centrifuge briefly prior to opening vial. For short-term storage (1-2 weeks), store at 4°C. For long-term storage, aliquot and store at -20°C or below. Avoid multiple freeze-thaw cycles.
<b>Note</b>	For research use only.
<b>Isotype</b>	IgG1
<b>Clonality</b>	Monoclonal
<b>Purity</b>	Protein G purified
<b>Clone ID</b>	6B4
<b>Uniprot ID</b>	<b>P38398</b>
<b>Entrez</b>	<b>672</b>
<b>Dilution Range</b>	WB: 1:500-1:3000, ICC: 1:100-1:1000



BRCA1 antibody 6B4 (GRP538) was used for western blot assay at 1:1000 antibody dilution. western blot assay was performed using MCF7 (human) and MEF (mouse embryonic fibroblast) cell lysate separated in a 5-15% gradient gel. Observed molecular weight of BRCA1 is approximately 220 kDa.



BRCA1 antibody 6B4 (GRP538) was used for immunofluorescent staining of BRCA1 nuclear foci induced by ionizing radiation. IR-treated (2 hr / 4 gray IR) U2OS cells were pre-extracted with CSK buffer on ice for 4 min before fixation with 4% PFA in room temperature.