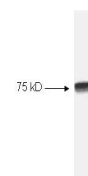


Product Datasheet

NFKB cRel (RABBIT) Antibody GRP1648

| | |
|----------------------------|---|
| Species/Host | Rabbit |
| Reactivity | Human |
| Conjugation | Unconjugated |
| Tested Applications | ELISA, SDS-PAGE, WB |
| Form/Appearance | 0.02 M Potassium Phosphate, 0.15 M Sodium Chloride, pH 7.2 |
| Concentration | 80 mg/ml |
| Note | For research use only. |
| Isotype | Antiserum |
| Clonality | Polyclonal |
| Source | NFkB cRel peptide corresponding to a region near the C-terminus of the human protein conjugated to Keyhole Limpet Hemocyanin (KLH). |
| Uniprot ID | Q04864 |
| Entrez | https://www.ncbi.nlm.nih.gov/gene//5966 |
| Dilution Range | ELISA: 1:5,000 - 1:25,000, Gel Shift: 1:500, Western Blot: 1:500 - 1:3,000 |



Anti-NFKB cRel Antibody -
Western Blot