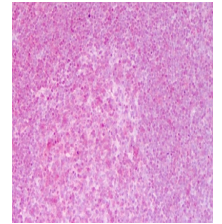


Product Datasheet

NFKB p65 (Rel A) (RABBIT) Antibody GRP1645

Species/Host	Rabbit
Reactivity	Human, Mouse
Conjugation	Unconjugated
Tested Applications	ChIP, ELISA, IHC-P, SDS-PAGE, WB
Concentration	80 mg/ml
Note	For research use only.
Isotype	Antiserum
Clonality	Polyclonal
Source	NFkB p65 (Rel A) peptide corresponding to a region near the C-terminus of the human protein conjugated to Keyhole Limpet Hemocyanin (KLH).
Uniprot ID	Q04206
Entrez	https://www.ncbi.nlm.nih.gov/gene//5970
Dilution Range	ELISA: 1:5,000,ChIP: 1 µl/IP,Gel Shift: 05 µL - 1.0 µL,Immunocytochemistry: 1:400,Western Blot: 1:2,000 - 1:5,000



NFKB p65 (Rel A) antibody
-
IHC