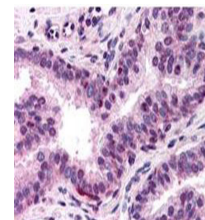


Product Datasheet

NF-Y (A subunit) (RABBIT) Antibody GRP1492

Species/Host	Rabbit
Reactivity	Human
Conjugation	Unconjugated
Tested Applications	ELISA, IHC-P, SDS-PAGE, WB
Concentration	90 mg/ml
Note	For research use only.
Isotype	Antiserum
Clonality	Polyclonal
Purity	Anti-NF-Y (A subunit) Antibody was prepared from monospecific antiserum by delipidation and defibrination.
Source	NF-Y (A subunit specific) peptide corresponding to a region near the N-terminus of the human protein conjugated to Keyhole Limpet Hemocyanin (KLH).
Uniprot ID	P23511
Entrez	https://www.ncbi.nlm.nih.gov/gene//4800
Dilution Range	ELISA: 1:20,000 - 1:100,000, Gel Shift: Use 2.0 µL, Immunochemistry: 1:400, Western Blot: 1:2,000 - 1:10,000



Anti-NF-Y (A Subunit)
Antibody
- Immunohistochemistry