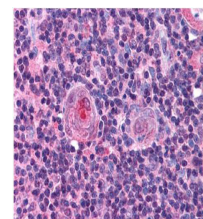


## Product Datasheet

### NF-Y (B subunit) (RABBIT) Antibody GRP1493

<b>Species/Host</b>	Rabbit
<b>Reactivity</b>	Human
<b>Conjugation</b>	Unconjugated
<b>Tested Applications</b>	ELISA, IHC-P, SDS-PAGE, WB
<b>Concentration</b>	90 mg/mL
<b>Note</b>	For research use only.
<b>Isotype</b>	Antiserum
<b>Clonality</b>	Polyclonal
<b>Purity</b>	This product was prepared from monospecific antiserum by delipidation and defibrination.
<b>Source</b>	NF-Y (B subunit specific) peptide corresponding to a region near the N-terminus of the human protein conjugated to Keyhole Limpet Hemocyanin (KLH).
<b>Uniprot ID</b>	<b>P25208</b>
<b>Entrez</b>	<a href="https://www.ncbi.nlm.nih.gov/gene//4801">https://www.ncbi.nlm.nih.gov/gene//4801</a>
<b>Dilution Range</b>	ELISA: 1:5,000 - 1:25,000, Gel Shift: 0.5 to 1.0 $\mu$ L, Immunochemistry: 1:500, Western Blot: 1:500 - 1:3,000



Anti-NF-Y (B Subunit)  
Antibody  
– Immunohistochemistry