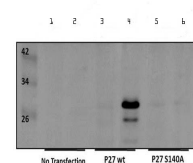


Product Datasheet

p27 kip1 pS140 (RABBIT) Antibody GRP3945

Description	Anti-p27 kip1 pS140 (RABBIT) Antibody
Species/Host	Rabbit
Reactivity	Human
Conjugation	Unconjugated
Tested Applications	ELISA, IHC-P, IP, WB
Form/Appearance	0.02 M Potassium Phosphate, 0.15 M Sodium Chloride, pH 7.2
Concentration	0.68 mg/mL
Note	For research use only.
Isotype	IgG
Clonality	Polyclonal
Source	Anti-p27 kip1 pS140 was prepared from whole rabbit serum produced by repeated immunizations with a synthetic peptide corresponding to S140 residue of human p27 kip1 protein.
Uniprot ID	P46527
Entrez	https://www.ncbi.nlm.nih.gov/gene//1027
Dilution Range	ELISA: 1:10,000 - 1:40,000, Immunochemistry: User Optimized, Immunoprecipitation: User Optimized, Western Blot: 1:500 - 1:4,000



Western Blot - Rabbit anti-p27kip1pS140