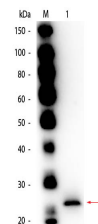


## Product Datasheet

# PAPAIN (GOAT) Antibody Biotin Conjugated GRP2026

<b>Description</b>	Anti-PAPAIN (GOAT) Antibody Biotin Conjugated
<b>Species/Host</b>	Goat
<b>Reactivity</b>	Plant
<b>Conjugation</b>	Biotin
<b>Tested Applications</b>	ELISA, IP, WB
<b>Form/Appearance</b>	0.02 M Potassium Phosphate, 0.15 M Sodium Chloride, pH 7.2
<b>Concentration</b>	1.0 mg/mL
<b>Note</b>	For research use only.
<b>Isotype</b>	IgG
<b>Clonality</b>	Polyclonal
<b>Source</b>	Papain [Carica papaya]
<b>Uniprot ID</b>	<b>P00784</b>
<b>Dilution Range</b>	ELISA: 1:1,000 - 1:10,000, Immunoprecipitation: User Optimized, Western Blot: 1:500 - 1:2,000
<b>Application Notes</b>	Anti-Papain antibody is suitable for ELISA and Western Blot. Expect band at 38.9 kDa in appropriate cell lysate or extract. Specific conditions for reactivity should be optimized by the end user.



Papain Antibody Biotin Conjugated - Western Blot