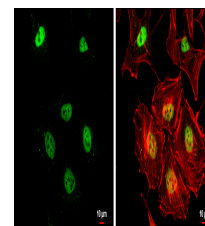


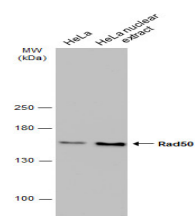
Product Datasheet

Rad50 antibody [13B3] GRP89

Description	RAD50 is an essential gene for all cell types and the expression does not vary during cell cycle. It is an excellent loading control at the high molecular weight position (150KD), complementing GAPDH, beta-Actin and alpha-Tubulin at the lower molecular weight positions.
Species/Host	Mouse
Reactivity	Human, Mouse, Rat, Monkey
Conjugation	Unconjugated
Tested Applications	ICC, IF, IHC-P, IP, WB
Immunogen	Amino acids 1-425 of Rad50 expressed in E. coli.
Form/Appearance	Liquid: PBS
Concentration	1 mg/ml
Storage	Store as concentrated solution. Centrifuge briefly prior to opening vial. For short-term storage (1-2 weeks), store at 4°C. For long-term storage, aliquot and store at -20°C or below. Avoid multiple freeze-thaw cycles.
Note	For research use only.
Isotype	IgG1
Clonality	Monoclonal
Purity	Affinity purified by Protein G.
Clone ID	13B3
Uniprot ID	Q92878
Entrez	10111
Dilution Range	WB: 1:500-1:3000, ICC: 1:100-1:1000, IHC-P: 1:100-1:1000



Rad50 antibody [13B3] detects Rad50 protein at nucleus by immunofluorescent analysis. Sample: HeLa cells were fixed in 4% paraformaldehyde at RT for 15 min. Green: Rad50 protein stained by Rad50 antibody [13B3] (GRP541) diluted at 1:200. Red: phalloidin, a c



HeLa whole cell and nuclear extracts (30 μg) were separated by 5% SDS-PAGE, and the membrane was blotted with Rad50 antibody [13B3] (GRP541) diluted at 1:1000. The HRP-conjugated anti-mouse IgG antibody was used to detect the primary antibody.