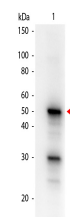


Product Datasheet

Pdcd4 pS457 (MOUSE) Monoclonal Antibody Biotin Conjugated GRP2228

Description	Anti-Pdcd4 pS457 (MOUSE) Monoclonal Antibody Biotin Conjugated
Species/Host	Mouse
Reactivity	Human, Mouse, Rat, Other
Conjugation	Biotin
Tested Applications	ELISA, IP, WB
Form/Appearance	0.02 M Potassium Phosphate, 0.15 M Sodium Chloride, pH 7.2
Concentration	0.5 mg/mL
Note	For research use only.
Isotype	IgG1
Clonality	Monoclonal
Source	This monoclonal antibody was produced by repeated immunizations with a synthetic peptide corresponding to residues surrounding Ser457 of the human Pdcd4 protein.
Clone ID	9G6
Uniprot ID	Q53EL6
Entrez	https://www.ncbi.nlm.nih.gov/gene//27250
Dilution Range	ELISA: 1:20,000 - 1:100,000, Immunoprecipitation: 1:1,000 - 1:5,000, Western Blot: 1:2,000 - 1:10,000



Pdcd4 phospho S457 Biotin Conjugated Antibody - Western Blot