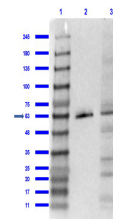


Product Datasheet

PPAR gamma 1 and 2 (internal) (RABBIT) Antibody GRP3405

Description	Anti-PPAR gamma 1 and 2 (internal) (RABBIT) Antibody
Species/Host	Rabbit
Reactivity	Human, Mouse, Rat, Rabbit, Dog, Guinea Pig, Squirrel, Primate, Hamster, Boar
Conjugation	Unconjugated
Tested Applications	ELISA, WB
Form/Appearance	0.02 M Potassium Phosphate, 0.15 M Sodium Chloride, pH 7.2
Concentration	1.1 mg/mL
Note	For research use only.
Isotype	IgG
Clonality	Polyclonal
Source	This affinity purified antibody was prepared from whole rabbit serum produced by repeated immunizations with a synthetic peptide corresponding to an internal region near amino acids 250-300 of human PPAR gamma isoform 1.
Uniprot ID	P37231
Entrez	https://www.ncbi.nlm.nih.gov/gene//5468
Dilution Range	ELISA: 1:8,000 - 1:32,000, Western Blot: User optimized
Application Notes	This affinity-purified antibody has been tested for use in ELISA. Specific conditions for reactivity should be optimized by the end user.



Western Blot of Rabbit Anti-PPAR gamma 1&2 Antibody