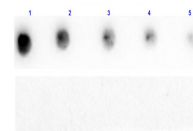


Product Datasheet

PROTEIN A (CHICKEN) Antibody GRP2775

Description	Anti-PROTEIN A (CHICKEN) Antibody
Species/Host	Chicken
Reactivity	Protein
Conjugation	Unconjugated
Tested Applications	ELISA, WB
Form/Appearance	0.02 M Potassium Phosphate, 0.15 M Sodium Chloride, pH 7.2
Concentration	1 mg/ml
Note	For research use only.
Isotype	IgY
Clonality	Polyclonal
Source	This IgY fraction antibody was prepared from eggs of chickens laid after repeated immunizations with Protein A [Staphylococcus aureus].
Dilution Range	ELISA: 1:500 - 1:2,000, Western Blot: 1:500 - 1:2,000



Dot Blot of Chicken
Anti-Protein A Antibody.