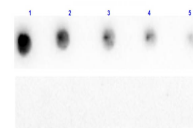


## Product Datasheet

### PROTEIN A (CHICKEN) Antibody GRP2776

<b>Description</b>	Anti-PROTEIN A (CHICKEN) Antibody
<b>Species/Host</b>	Chicken
<b>Reactivity</b>	Protein
<b>Conjugation</b>	Unconjugated
<b>Tested Applications</b>	ELISA, WB
<b>Form/Appearance</b>	0.02 M Potassium Phosphate, 0.15 M Sodium Chloride, pH 7.2
<b>Concentration</b>	1 mg/ml
<b>Note</b>	For research use only.
<b>Isotype</b>	IgY
<b>Clonality</b>	Polyclonal
<b>Source</b>	This IgY fraction antibody was prepared from eggs of chickens laid after repeated immunizations with Protein A [Staphylococcus aureus].
<b>Dilution Range</b>	ELISA: 1:500 - 1:2,000, Western Blot: 1:500 - 1:2,000



Dot Blot of Chicken  
Anti-Protein A Antibody.