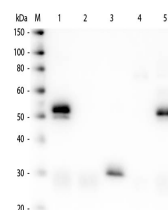


Product Datasheet

RABBIT IgG (H&L) (DONKEY) Antibody (Min X Bv Ch Gt GP Ham Hs Hu Ms Rt & Sh Serum Proteins) GRP5063

Description	Anti-RABBIT IgG (H&L) (DONKEY) Antibody (Min X Bv Ch Gt GP Ham Hs Hu Ms Rt & Sh Serum Proteins)
Species/Host	Donkey
Reactivity	Rabbit
Conjugation	Unconjugated
Tested Applications	ELISA, IHC-P, WB
Form/Appearance	0.02 M Potassium Phosphate, 0.15 M Sodium Chloride, pH 7.2
Concentration	1.0 mg/mL
Note	For research use only.
Isotype	IgG
Clonality	Polyclonal
Source	Anti-Rabbit IgG (H&L) was produced by repeated immunization with rabbit whole IgG molecule in donkey.
Dilution Range	ELISA: 1:20,000 - 1:100,000, Immunochemistry: 1:1,000 - 1:5,000, Western Blot: 1:2,000 - 1:10,000
Application Notes	Anti-Rabbit IgG (H&L) is suitable for use in immunoelectrophoresis, western-blot, competitive western-blot, ELISA and competitive ELISA assays. Specific conditions for reactivity and signal detection should be optimized by the end user.



Western Blot of Anti-Rabbit IgG (H&L) (DONKEY) Antibody (Min X Bv Ch Gt GP Ham Hs Hu Ms Rt & Sh Serum Proteins)