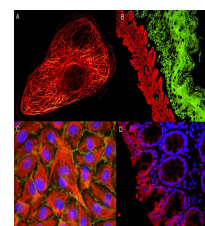


## Product Datasheet

# RABBIT IgG (H&L) (GOAT) Antibody ATTO 488 Conjugated (Min X Bv Ch Gt GP Ham Hs Hu Ms Rt & Sh Serum Proteins) GRP4997

<b>Description</b>	Anti-RABBIT IgG (H&L) (GOAT) Antibody ATTO 488 Conjugated (Min X Bv Ch Gt GP Ham Hs Hu Ms Rt & Sh Serum Proteins)
<b>Species/Host</b>	Goat
<b>Reactivity</b>	Rabbit
<b>Conjugation</b>	ATTO-488
<b>Tested Applications</b>	IF, IHC-P, WB
<b>Form/Appearance</b>	0.02 M Potassium Phosphate, 0.15 M Sodium Chloride, pH 7.2
<b>Concentration</b>	1.0 mg/mL
<b>Note</b>	For research use only.
<b>Isotype</b>	IgG
<b>Clonality</b>	Polyclonal
<b>Source</b>	Rabbit IgG whole molecule
<b>Dilution Range</b>	FLISA: >1:20,000, Fluorochrome: 3.0, IF Microscopy: >1:5,000, Western Blot: >1:10,000



Atto  
Dye-Immunofluorescence  
microscopy