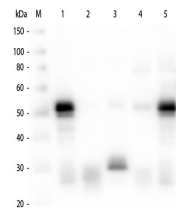


## Product Datasheet

# RABBIT IgG (H&L) (GOAT) Antibody Rhodamine Conjugated GRP4955

<b>Description</b>	Anti-RABBIT IgG (H&L) (GOAT) Antibody Rhodamine Conjugated
<b>Species/Host</b>	Goat
<b>Reactivity</b>	Rabbit
<b>Conjugation</b>	Rhodamine (TRITC)
<b>Tested Applications</b>	FC, IF, IHC-P
<b>Form/Appearance</b>	0.02 M Potassium Phosphate, 0.15 M Sodium Chloride, pH 7.2
<b>Concentration</b>	2.0 mg/mL
<b>Note</b>	For research use only.
<b>Isotype</b>	IgG
<b>Clonality</b>	Polyclonal
<b>Purity</b>	This product was prepared from monospecific antiserum by immunoaffinity chromatography using Rabbit IgG coupled to agarose. Assay by immunoelectrophoresis resulted in a single precipitin arc against anti-Goat Serum, Rabbit IgG and Rabbit Serum.
<b>Source</b>	Rabbit IgG whole molecule
<b>Dilution Range</b>	FLISA: 1:10,000 - 1:50,000, Flow Cytometry: 1:500 - 1:2,500, Fluorochrome: 2.75, IF Microscopy: 1:1,000 - 1:5,000



Western Blot of Anti-Rabbit IgG (H&L) (GOAT) Antibody