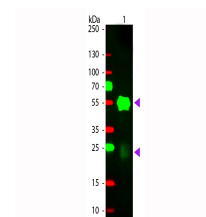


Product Datasheet

RABBIT IgG (H&L) (GOAT) Antibody Rhodamine Conjugated GRP4956

Description	Anti-RABBIT IgG (H&L) (GOAT) Antibody Rhodamine Conjugated
Species/Host	Goat
Reactivity	Rabbit
Conjugation	Rhodamine (TRITC)
Tested Applications	FC, IF, IHC-P
Form/Appearance	0.02 M Potassium Phosphate, 0.15 M Sodium Chloride, pH 7.2
Concentration	1.0 mg/mL
Note	For research use only.
Isotype	IgG
Clonality	Polyclonal
Purity	This product was prepared from monospecific antiserum by immunoaffinity chromatography using Rabbit IgG coupled to agarose. Assay by immunoelectrophoresis resulted in a single precipitin arc against anti-Goat Serum, Rabbit IgG and Rabbit Serum.
Source	Rabbit IgG whole molecule
Dilution Range	FLISA: 1:10,000 - 1:50,000, Flow Cytometry: 1:500 - 1:2,500, Fluorochrome: 2.4, IF Microscopy: 1:1,000 - 1:5,000



WB - Rabbit IgG (H&L) Antibody Rhodamine Conjugated