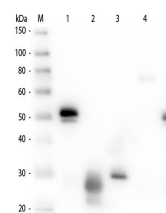


Product Datasheet

RABBIT IgG (H&L) (RAT) Antibody (Min X Hu, Gt, Ms Serum Proteins) GRP5039

Description	Anti-RABBIT IgG (H&L) (RAT) Antibody (Min X Hu, Gt, Ms Serum Proteins)
Species/Host	Rat
Conjugation	Unconjugated
Tested Applications	ELISA, IHC-P, WB
Form/Appearance	0.02 M Potassium Phosphate, 0.15 M Sodium Chloride, pH 7.2
Concentration	1.0 mg/mL
Note	For research use only.
Isotype	IgG
Clonality	Polyclonal
Source	Rabbit IgG whole molecule
Dilution Range	ELISA: 1:900,000, Immunochemistry: 1:1,000 - 1:5,000, Western Blot: 1:20,000 - 1:100,000

Application Notes Anti-Rabbit IgG antibody is suitable for use in ELISA, immunohistochemistry, and western blot. Specific conditions for reactivity should be optimized by the end user.



Western Blot of Anti-Rabbit IgG (H&L) (RAT) Antibody (Min X Hu, Gt, Ms Serum Proteins)