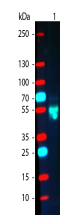


Product Datasheet

RABBIT IgG [H&L] (GOAT) Antibody Phycoerythrin conjugated (Min X Bv Ch Gt GP Ham Hs Hu Ms Rt & Sh Serum Proteins) GRP4968

Description	Anti-RABBIT IgG [H&L] (GOAT) Antibody Phycoerythrin conjugated (Min X Bv Ch Gt GP Ham Hs Hu Ms Rt & Sh Serum Proteins)
Species/Host	Goat
Reactivity	Rabbit
Conjugation	RPE
Tested Applications	FC, IF
Form/Appearance	0.02 M Potassium Phosphate, 0.15 M Sodium Chloride, pH 7.2
Concentration	0.5 mg/mL
Note	For research use only.
Isotype	IgG
Clonality	Polyclonal
Source	Anti-Rabbit IgG was produced by repeated immunization with rabbit IgG whole molecule in goat.
Dilution Range	Flow Cytometry: 1:100 - 1:250, IF Microscopy: 1:100 - 1:250



WB - Rabbit IgG (H&L)
Antibody
Phycoerythrin conjugated
Pre-Adsorbed