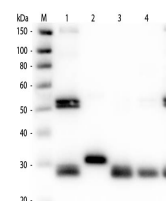


Product Datasheet

RAT IgG (H&L) (RABBIT) Antibody (Min X Human Serum Proteins) GRP5161

Description	Anti-RAT IgG (H&L) (RABBIT) Antibody (Min X Human Serum Proteins)
Species/Host	Rabbit
Reactivity	Rat
Conjugation	Unconjugated
Tested Applications	ELISA, IHC-P, WB
Form/Appearance	0.02 M Potassium Phosphate, 0.15 M Sodium Chloride, pH 7.2
Concentration	2.2 mg/mL
Note	For research use only.
Isotype	IgG
Clonality	Polyclonal
Source	Anti-Rat IgG (H&L) was produced by repeated immunization with rat IgG whole molecule in rabbit
Dilution Range	ELISA: 1:20,000 - 1:300,000, Immunochemistry: 1:1,000-1:5,000, Western Blot: 1:2,000-1:10,000



Western Blot of Anti-Rat IgG (H&L) (RABBIT) Antibody (Min X Human Serum Proteins)