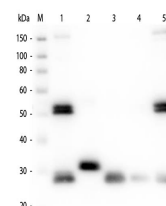


Product Datasheet

RAT IgG [H&L] (GOAT) Antibody Phycoerythrin conjugated Min X Bv Ch Gt GP Ham Hs Hu Ms Rb and Sh Serum Proteins GRP5105

Description	Anti-RAT IgG [H&L] (GOAT) Antibody Phycoerythrin conjugated Min X Bv Ch Gt GP Ham Hs Hu Ms Rb and Sh Serum Proteins
Species/Host	Goat
Reactivity	Rat
Conjugation	RPE
Tested Applications	FC, IF
Form/Appearance	0.02 M Potassium Phosphate, 0.15 M Sodium Chloride, pH 7.2
Concentration	0.5 mg/mL
Note	For research use only.
Isotype	IgG
Clonality	Polyclonal
Source	Anti-Rat IgG whole molecule was produced by repeated immunization with Rat IgG whole molecule in goat.
Dilution Range	Flow Cytometry: 1:100 - 1:250, IF Microscopy: 1:100 - 1:250



Western Blot of Anti-Rat IgG (H&L) (GOAT) Antibody (Min X Bv Ch Gt GP Ham Hs Hu Ms Rb & Sh Serum Proteins)